

Project Notes:

My World



New Terms/ Vocabul

What two
standards
need to be
met to be a
social issue?

- Social- having to do with the interests of society.
- Issue- An argument or debate between two or more people.

Terms

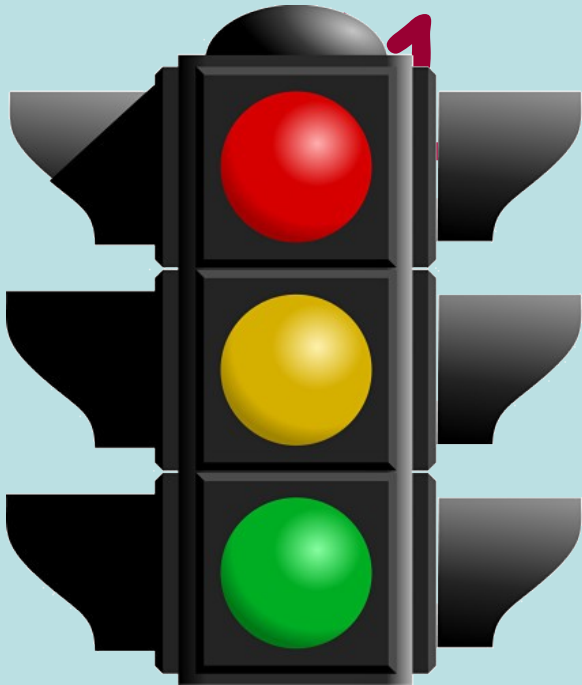
/

Vocabulary

What do all three of these meanings have in common?

- Monochromatic- A color scheme involving the use of only one hue (color) that can vary in value or intensity.
- Tinting- Adding white to a color to make it lighter and more neutral.
- Shading- Adding black to a color to make it darker and more neutral.

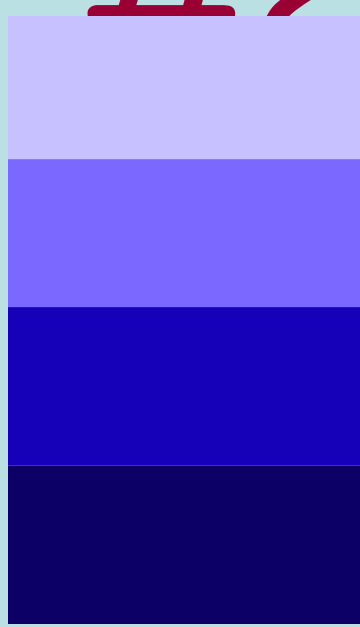
Learning Goal



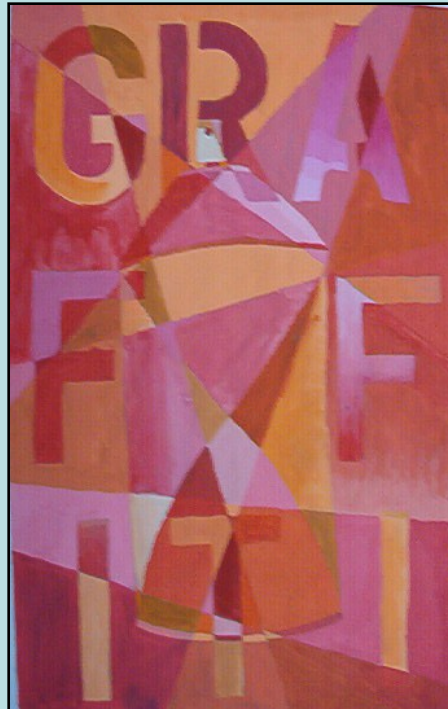
- To be able to **maintain a monochromatic color** chosen to help understand the meaning of a work of art.



Learning Goal #2



- To be able to **tint and shade** color to add to the variety in your work and define the shapes.



Learning Goal #2

- To be able to identify **social issues**, opposing viewpoints or causes, and possible solutions.



Learning Goal #4

- **CRAFTSMANSHIP**
 - Protect work from damage
 - Erase all pencil marks
 - Clean, careful painting

Project Steps



1. Using scissors, **clip 5 pictures of single objects** from a magazine and glue them to a separate sheet of paper. *These are added to your sketchbook.*
2. **Below each object write a social issue that may be related to the object** such as: flowers-war, food-poverty, gravestone-crime, etc. **NO PEOPLE** (*It is a good idea to reduce the social issue to one or two words.*).
3. On a 12"X18" sheet of white sulfite paper, **draw a one inch border** along each edge of the paper.

Project Steps

4. Inside the border, **draw the object you think will work best from your group of clippings as large as possible** limiting the amount of negative space (extra space around the object).
5. Using the stencils available in class, **write your social issue across the surface of your composition.** It is OK for the letters to overlap each other, the object you've drawn, or both.
(Remember, one or two words.)
6. Once you've completed the drawing, and have written in your social issue, **draw at least 7 straight lines completely across the surface of the paper.** The lines should cross over the top of both the drawing and the social issue you've written across it and make many little pieces for painting.

Project Steps

7. **Paint** in each “piece” of the painting using **tempera paint**.
8. **Tint or shade pieces by adding black or white to these colors.** Each piece should all be painted a different tint or shade from the ones next to it.

9. **On the back of your project answer the following questions:**

1. Name and Period Number
2. Project name and Media (Tempera on Paper)
3. What is your social issue?
4. What are the two sides to the debate for your social issue?
5. What do you think should be done about your social issue?
6. What is the image that you've chosen for this painting?
7. How is the image related to your social issue?
8. How's the color's meaning you've chosen related to the social issue?

Sketch check: Your World

Due the
end of
the
second
week

- “The Village” worksheets part 1,2, and 3.
- Art History Notes: “Cubism”
- Project Notes: “Your World”
- Social Issue and Color Meaning worksheet.
- 5 Object Clippings

