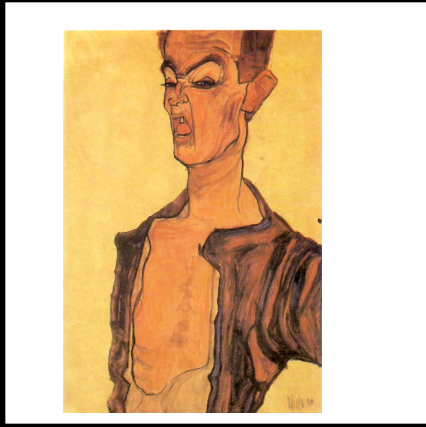


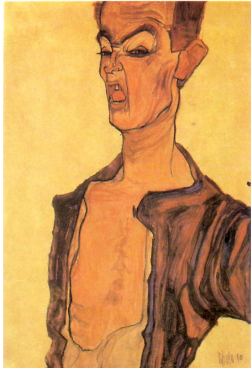
Egon
Schiele
1890-1918





Egon Schiele

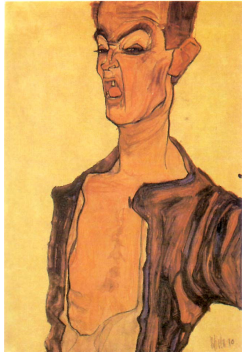
- Born the son of Austrian railway official in the small town of Tulln.
 - Home life was upper middle class and restrictive
 - Father died when he was 14
- Poor grades at high school prevent him from attending the school his uncle wanted him to attend
- Attended art school in Vienna after local artists recognized his talent.



How old was Egon Schiele when he had his first exhibition?

Egon Schiele

- Schiele was able to get his work into an exhibition in Vienna in 1908
 - His work was noticed by collectors and Arthur Roessler, an art critic.
 - Roessler became a friend and helped Schiele in many ways in his short life.
 - Soon Schiele grew distrustful of city life and moved to the countryside.
- War broke out in 1914- WWI
 - At first Schiele got out of service due to his poor health
 - In 1915 he was drafted into service in the military administration.



Egon Schiele

- In 1917 he was able to get stationed near Vienna to be close to the art scene
- In 1918 Schiele's wife, Edith, contracted influenza and died. Egon Schiele died a few days later from the same disease on October 31, 1918.
- Schiele is remembered as part of the Art Nouveau style and beyond to expressionism.

What is a pandemic?

Which pandemic struck in 1918?

Woman with
hands folded

Charcoal
Drawing

Looking at
this drawing,
what do you
think the
model's
personality
was like?



Crouching
Woman

Charcol
Drawing

How is this
model's
personality
different from
that in the
last picture?



Self Portrait

How do you think Schiele feels in this portrait?



Poster Design

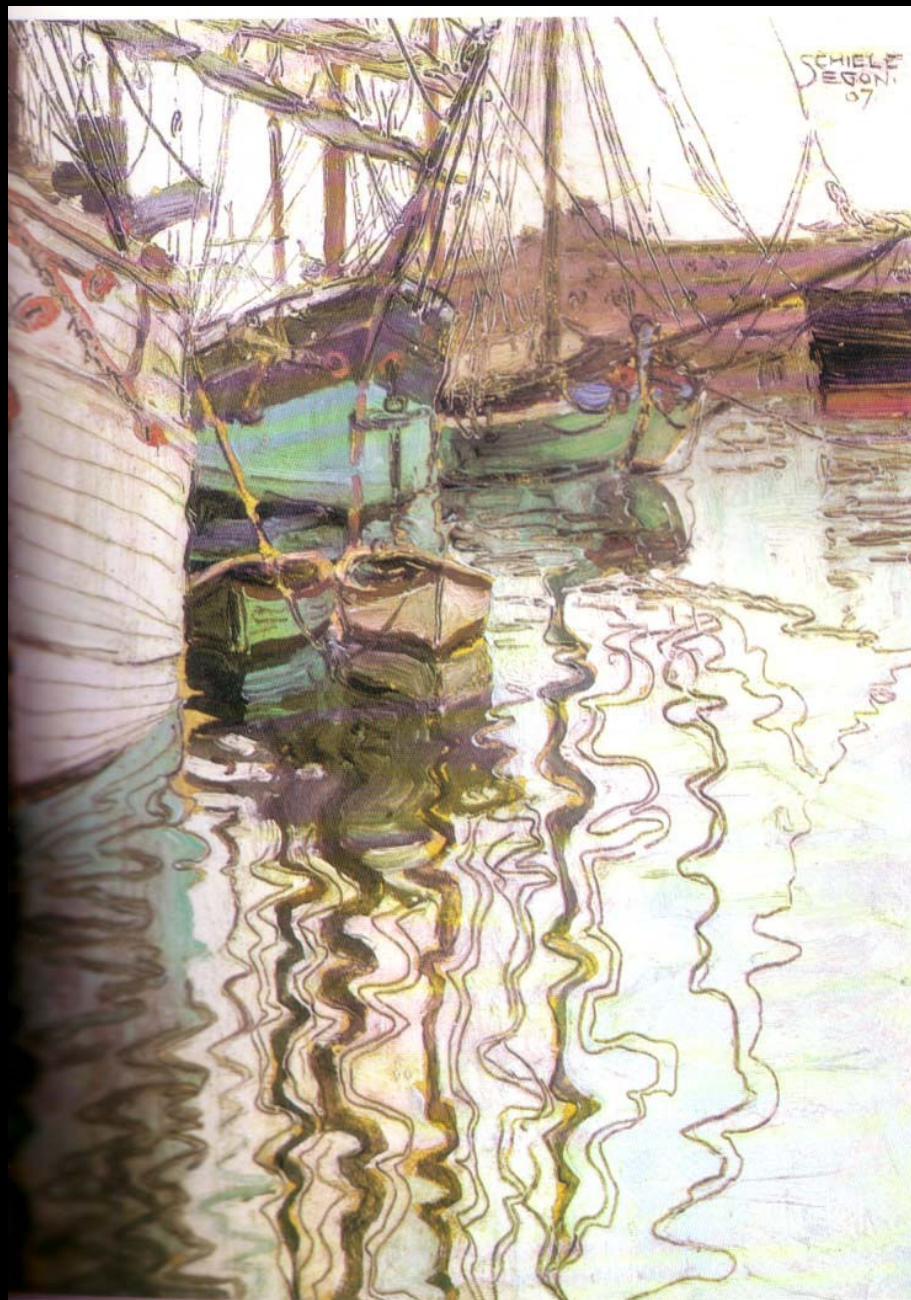
Charcoal and
light wash



Sailing Boats in
Undulating
Water (Trieste).

1907

Oil and pencil on
Cardboard



Autumn Tree

1909

Oil on Canvas



Autumn Trees I

1911

Oil on Canvas



Table III

Self Portrait.
1910
Charcoal and
covering
colors

