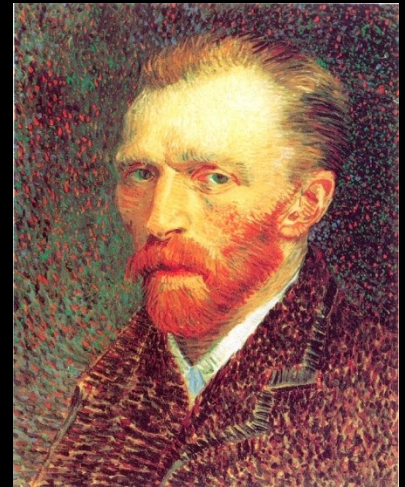


A Valuable Portrait

Working with the crosshatching
technique to match value

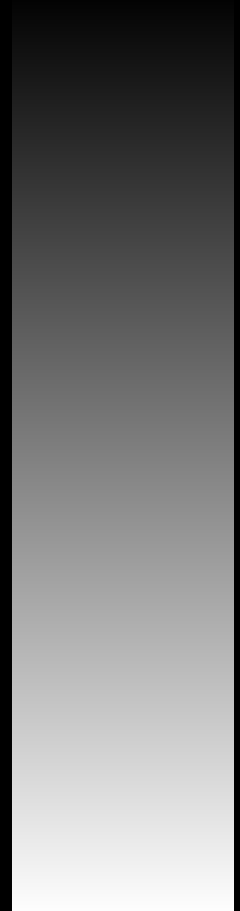
New Terms/Vocabulary

- **Value-** An element of art that refers to luminance or luminosity — the lightness or darkness of a color.
- **Portrait-** an artistic representation of a person, in which the face and its expression is predominant and/or the intent is to display the likeness, personality, and even the mood of the person.



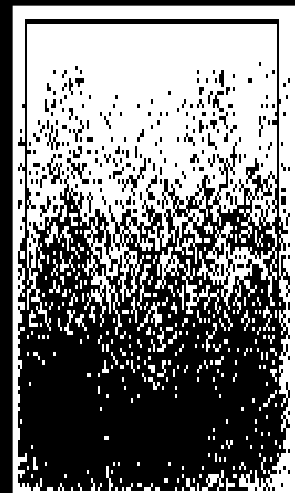
New Terms/Vocabulary

- **Value Scale-** A drawing or creation showing an even transition from a dark value (the darkest value being black or 100% light absorption) to a light value (the lightest value being white or 0% light absorption).



New Terms/Vocabulary

- **Cross Hatching**- to paint, draw, or engrave something using intersecting lines or strokes.
- **Stippling**- to paint, draw, or engrave something using dots or short dabbing strokes.



Learning Objectives

1. to match photocopy values in a drawing using graphite
2. To use the crosshatching technique to control value in graphite
3. Craftsmanship

Project Steps

1. Draw a 1inch border on a 9”X12” sheet of drawing paper
2. Tape your half of a portrait to the top of the drawing paper so that the tape acts as a hinge.

Project Steps

3. Draw a very light contour drawing continuing the face from the photocopy out onto your sheet of drawing paper.
4. Using the **crosshatching** technique with graphite (pencil) darken in the shaded areas to match the value of the photocopy

Turn in:

- The Valuable Portrait
 - Your name on back
 - Your period number on back
 - Media: Graphite on Paper
 - The photocopy still taped to the front.